

EMERGENCY MANAGEMENT RESPONSE GUIDE 08A



Active Assailant
Incident Management
Updated: 11/22/2022

START HERE: SECTION 1 - FIRST ON-SCENE

LE - 1ST ARRIVING:

- Size-up report.
- Identify **HOT ZONE:** _____
- _____
- Establish **COMMAND**.
- RADIO ID: CONTACT 1.**
- ENGAGE!**

LE - 2ND - 4TH ARRIVING:

- Communicate with CONTACT 1.
- Link-up.

LE - 5TH ARRIVING (5TH MAN):

- RADIO ID: TACTICAL.**
- Get a verbal briefing.
- Assume **COMMAND**.
- Identify **STAGING AREA** location: _____

- Request additional resources.
- Assign **CONTACT TEAMS**.

1ST LE SUPERVISOR:

- Get a verbal briefing.
- Assume **COMMAND**.
- Identify **COMMAND POST** location: _____

- Assign **STAGING MANAGER**.
- Assign **PERIMETER GROUP**.
- Assign **MEDICAL BRANCH** to FD/EMS.

2ND LE SUPERVISOR:

- Get a verbal briefing.
- Assume **COMMAND**.
- Request additional resources.
- Designate 1ST LE SUPERVISOR as
- LAW ENFORCEMENT BRANCH**.
- Assign **INTELLIGENCE SECTION**.
- Assign **LEAD PIO**.

SECTION 2 - LAW ENFORCEMENT

LAW ENFORCEMENT BRANCH:

- Get a verbal briefing.
- Co-locate with **MEDICAL BRANCH**.
- Coordinate with **INTELLIGENCE SECTION**.

TACTICAL GROUP:

- Coordinate **CONTACT TEAMS**.
- Co-locate with **TRIAGE & TRANSPORT GROUPS**.
- Priorities: 1) **THREAT**, 2) **RESCUE**, 3) **CLEAR**.
- Update **HOT ZONE:** _____

- Identify **WARM ZONE:** _____

- Update casualties to **TRIAGE GROUP**.

CONTACT TEAM:

- Contain or neutralize threat.
- Update location as moving.
- Report casualty locations and numbers.
- Identify **CASUALTY COLLECTION POINT**
- (CCP) location: _____

PERIMETER GROUP:

- Separate radio channel for the leader:
- RADIO CHANNEL:** _____
Leader monitors their channel AND the assigned BRANCH/COMMAND channel.
- Identify **INNER PERIMETER** boundaries: _____
- _____
- _____

- Identify **OUTER PERIMETER** boundaries: _____
- _____
- _____

INTELLIGENCE SECTION:

- Get a verbal briefing.
- Separate radio channel for the leader:
- RADIO CHANNEL:** _____
Leader monitors their channel AND the assigned BRANCH/COMMAND channel.
- Coordinate with **COMMUNICATIONS CENTER**.
- Collect incoming information, tips, leads.
- Brief **COMMAND**.
- Consider a **REUNIFICATION BRANCH**.
- Assign **INVESTIGATIVE OPERATIONS GROUP**.
- Assign **INTELLIGENCE GROUP**.

SECTION 3 - FIRE / EMS

1ST FD/EMS SUPERVISOR:

- Go to the **COMMAND POST**.
- Request **MEDICAL BRANCH** assignment.

MEDICAL BRANCH:

- Get a verbal briefing.
- Request additional resources.
- Assign **TRIAGE GROUP**.
- Assign **TRANSPORT GROUP**.
- Co-locate with **LAW ENFORCEMENT BRANCH**.
- Consider a **TREATMENT GROUP**.

TRIAGE GROUP:

- Get a verbal briefing.
- Stand up **RESCUE TASK FORCES**.
- Co-locate with **TACTICAL GROUP** and **TRANSPORT GROUP**.
- Get operable areas, routes, and **CASUALTY COLLECTION POINT** location(s).
- Deploy **RESCUE TASK FORCES**.

RESCUE TASK FORCE (RTF):

- Assemble teams and equipment.
- Minimum 2 LE, 2 Medical for each RTF.
- RTF LE notifies **TACTICAL** when deploying.
- If not yet done, establish **CASUALTY COLLECTION POINT (CCP)**.
- Rapidly assess casualties.
- Reports counts to **TRIAGE GROUP**.
- Identify **AMBULANCE EXCHANGE POINT (AEP)** Location: _____

- Confirm AEP with **TACTICAL**.
- Coordinate casualty evacuation.

TRANSPORT GROUP:

- Get a verbal briefing.
- Co-locate with **TACTICAL & TRIAGE GROUPS**.
- Determine routes.
- Separate radio channel for the leader:
- RADIO CHANNEL:** _____
Leader monitors their channel AND the assigned BRANCH/COMMAND channel.
- Get hospital capacity counts.
- Transport casualties from the AEP.
- Target 3 casualties per ambulance, 1 each: red/yellow/green.
- Keep a transport log of distribution to hospitals.

SECTION 4 - MULTI-DISCIPLINE

STAGING:

- Check-in and list resources.
- Assign resources, locations, radio channel.
- Prioritize assignments as directed.
- Maintain minimum resources as directed.

LEAD PIO:

- Establish **JOINT INFORMATION CENTER**, Location: _____
- Establish a **MEDIA STAGING AREA** Location: _____

- Clear all messaging with **COMMAND**.
- Announce **REUNIFICATION SITE** when authorized.

REUNIFICATION BRANCH:

- Get a verbal briefing.
- Select **REUNIFICATION SITE** location (**not for public release**): _____

- Get site approval from **INTELLIGENCE SECTION**, notify **DISPATCH**.
- Assign **SITE STAGING MANAGER**.
- Request additional resources.
- Assign **ACCOUNTABILITY GROUP**.
- Assign **ASSEMBLY** group.
- Assign **SERVICES** group.
- Notify **INTELLIGENCE SECTION** when ready to publicly announce location.

ACCOUNTABILITY GROUP:

- Assign **ACCOUNTANT UNIT**.
- Assign **CHECKER UNIT**.
- Assign **GREETER UNIT**.
- Assign **REUNIFIER UNIT**.
- Assign **EXIT CONTROL UNIT**.

ASSEMBLY GROUP:

- Assign **CLASS LEADER UNIT**.
- Assign **NUTRITION SUPPORT UNIT**.
- Consider **ENTERTAINMENT UNIT** (if young children are present).

SERVICES GROUP:

- Assign **SET-UP UNIT**.
- Assign **LAW ENFORCEMENT UNIT**.
- Assign **TRANSPORTATION UNIT**.
- Assign **MEDICAL UNIT**.
- Establish **FAMILY ASSISTANCE CENTER**.

Printing Instructions: In the Print dialogue box, click Properties - Under 2-Sided Printing select 2-Sided Print, Flip on Short Edge - change to Color - Print and fold on these lines

← Fold on this line →

← Fold on this line →

SECTION 5 - EXPLOSIVE DEVICE

DISCOVERY OR DETONATION:

- Announce "**BOMB COVER**" or "**BOMB GO.**"
- Conduct secondary threat scan.
- Maintain 540-degree scan.
- NEVER TOUCH** bombs.
- BOMBERS ARE BOMBS.**

CONTACT AND RESCUE:

- Consider threat to life and alternate route.
- Mark with chem lights and bypass.
- Provide security element if possible.

EXPOSED SURVIVOR RESCUE:

- Direct survivor movement explicitly.
- View area for secondary threats.
- Establish narrow cordon in/out of area.
- Provide **DIRECT THREAT CARE** only.
- Evacuate to standoff/isolate/barricade.

RADIO SAFE DISTANCE:

- 300 feet or standoff.
- Report IED location, description, size.
- Report action taken.
- Request **BOMB SQUAD.**

NO SURVIVORS THREATENED:

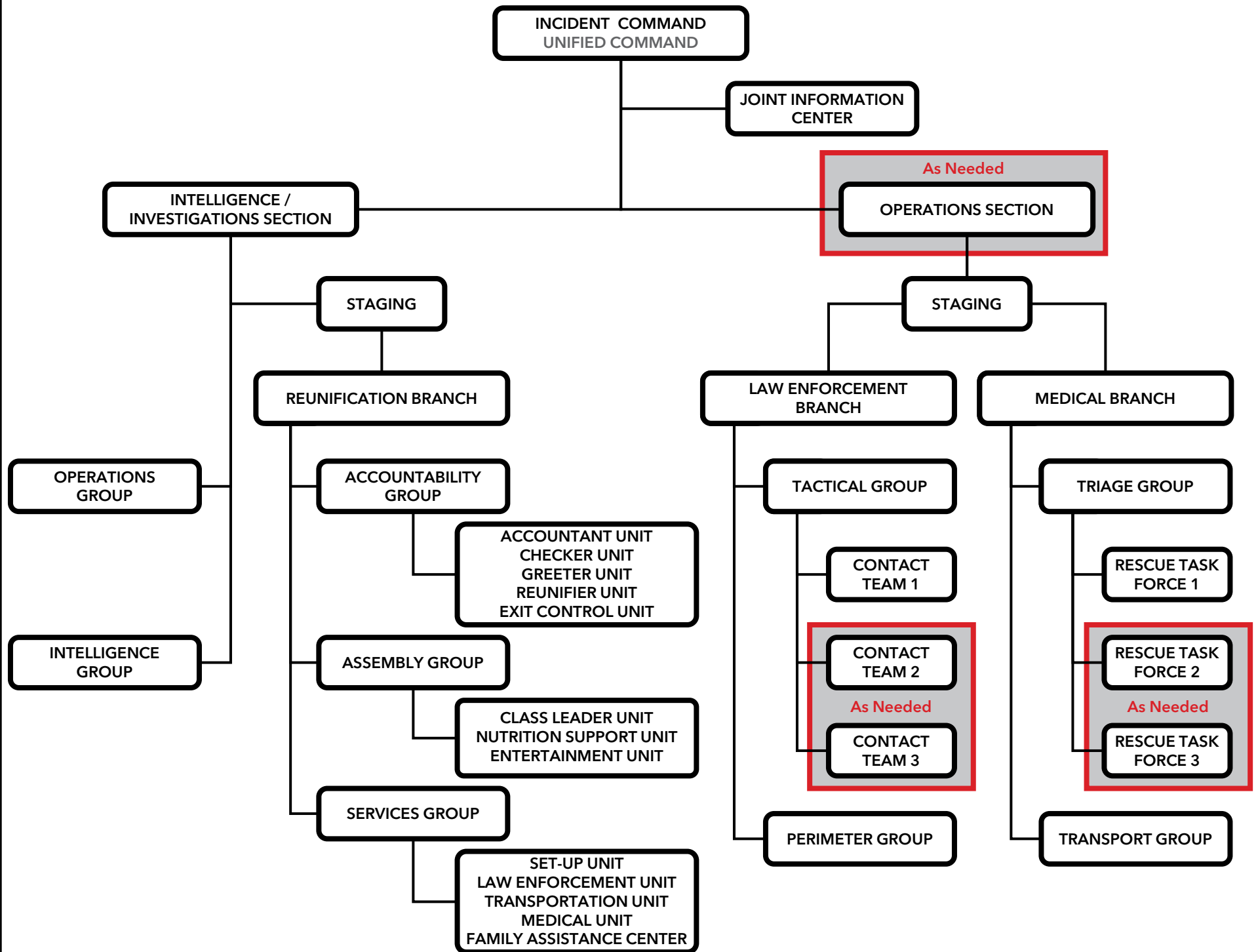
- View area for secondary threats.
- Reposition personnel to safe standoff.
- Report impacts to assignments/priorities.
- Cordon off 360-degree device kill zone.
- Control cordon security.

STANDOFF DISTANCES:

Device	Size	Minimum with Cover	Preferred
Pipe Bomb	5 lbs	70 ft	1,200 ft
Suicide Bomber	20 lbs	110 ft	1,700 ft
Briefcase or Suitcase	50 lbs	150 ft	1,850 ft
SUV or VAN	1,000 lbs	400 ft	2,400 ft

← Fold on this line →

SECTION 6 - ACTIVE ASSAILANT INCIDENT COMMAND - ORGANIZATION



START ON THE OTHER SIDE