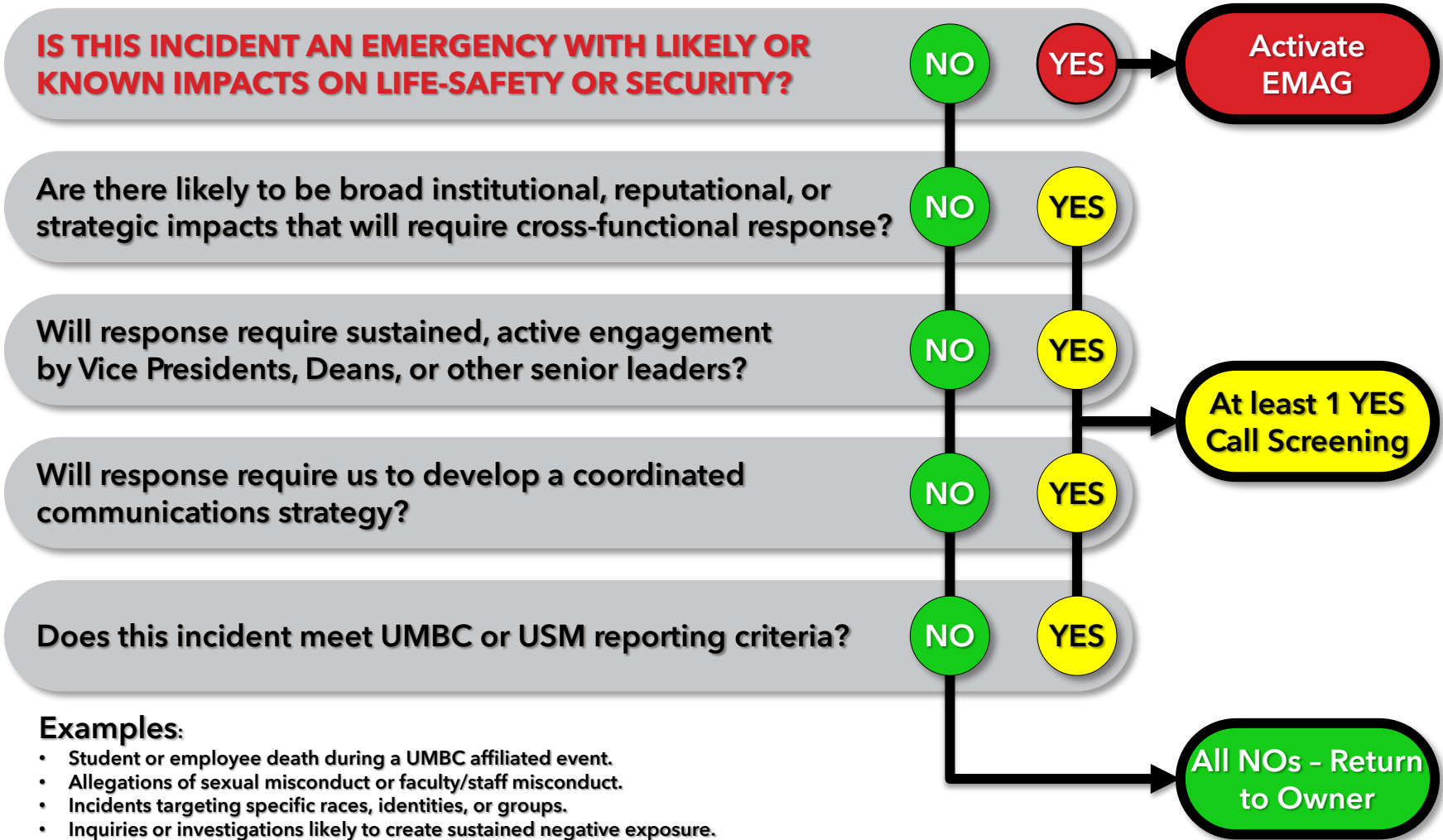


CHARGE: Decide the appropriate level of escalation for a negative event report.
Use this guide to help determine the need for a Screening Team meeting.



Examples:

- Student or employee death during a UMBC affiliated event.
- Allegations of sexual misconduct or faculty/staff misconduct.
- Incidents targeting specific races, identities, or groups.
- Inquiries or investigations likely to create sustained negative exposure.
- Systems or utility failures anticipated to last over 4 hours.
- Major IT breach or data compromise.